

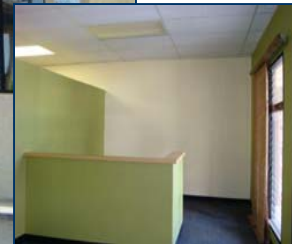
# Sunset Plaza

Global Knowledge. Regional Expertise. Local Results.

## OFFICE & RETAIL

77-6425 Kuakini Hwy, Kona, Hawaii 96740

296-A Alamaha Street, Kahului, HI 96732 | Ph: 808-877-9000 | Fx: 808-877-5078 | [www.IwadoRealty.com](http://www.IwadoRealty.com)



### CONTACT:

Jay Coskie - Broker  
808 - 938 - 6223  
[j@konacoskie.com](mailto:j@konacoskie.com)

Mary Christ - Broker  
808- 937- 8886  
[marychristkona@gmail.com](mailto:marychristkona@gmail.com)

**TMK: (3)-7-7-9-16**

<b>Zoning</b>	<b>CN - 10</b>
<b>Size (s)</b>	<b>161 - 908 sf</b>
<b>Lease</b>	<b>\$1.00 - \$1.10</b>
<b>CAM</b>	<b>\$0.65 psf</b>

### Features included:

- High visibility on Kuakini Hwy
- Great traffic count
- Minutes to downtown Kona
- Retail or office on 1st floor
- Office on 2nd floor
- Easy access

Give us a call to discuss how we can configure this versatile property to meet your specific business needs.